

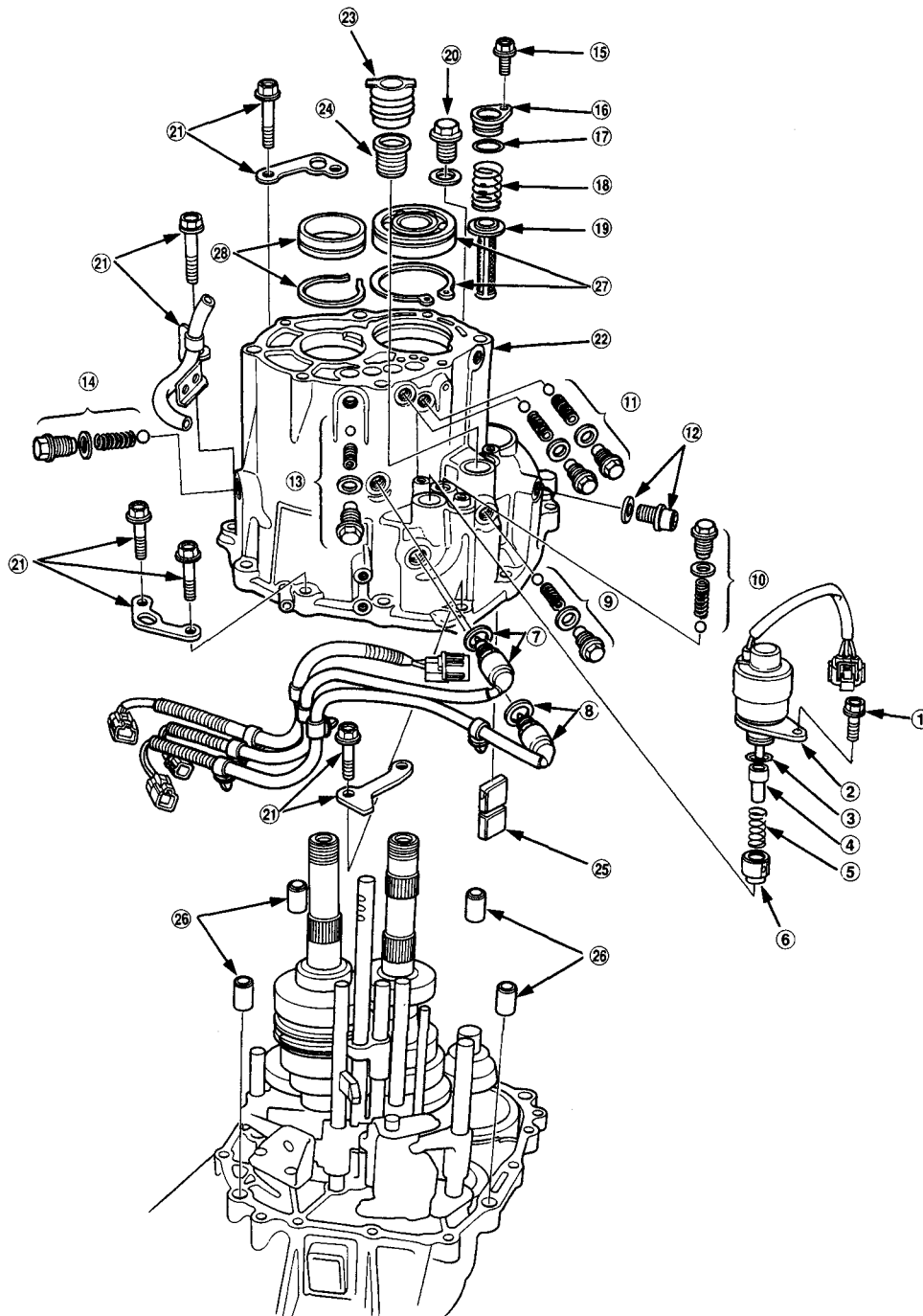
Transmission Housing

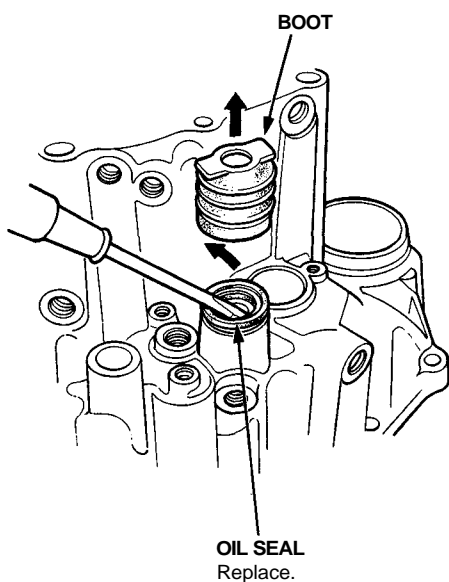
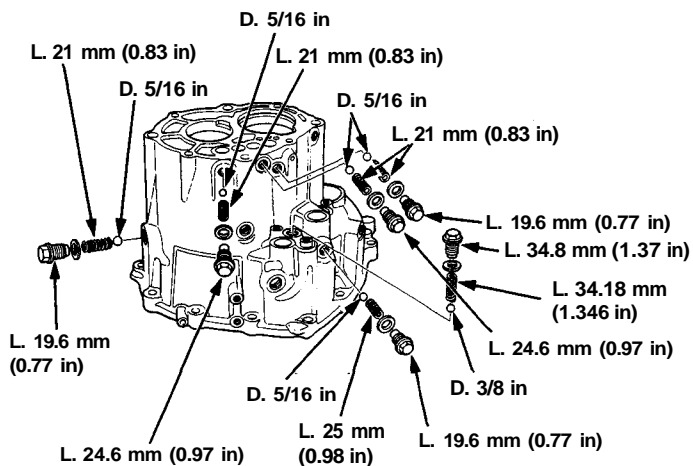
Removal

1. Remove the transmission housing following the numbered sequence.

NOTE:

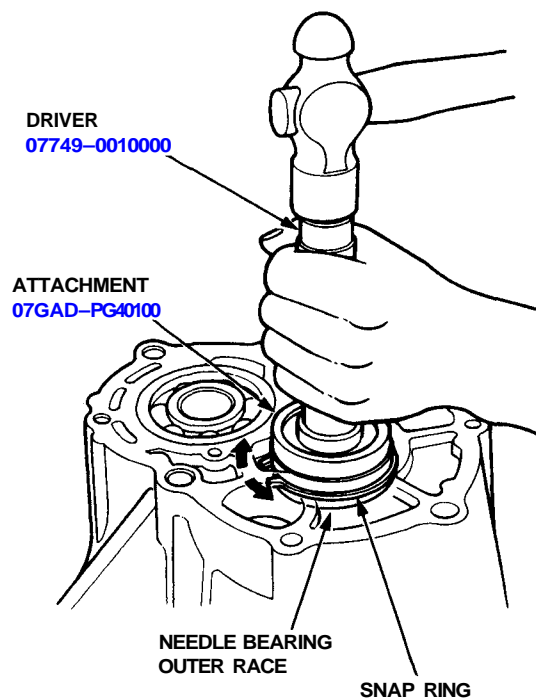
- Loosen the bolts (21) in a crisscross pattern in several steps.
- Replace all sealing washers, O-rings and oil seal.
- Always clean the magnet (25) and oil pump strainer (19).
- ①~⑥ ⑬ is 6-Speed type only.
- 6-Speed type is shown.





Mainshaft Side:

1. Remove the needle bearing outer race while expanding the snap ring using the special tools as shown.



Countershaft Side:

1. Remove the ball bearing while expanding the snap ring using the special tools as shown.

